

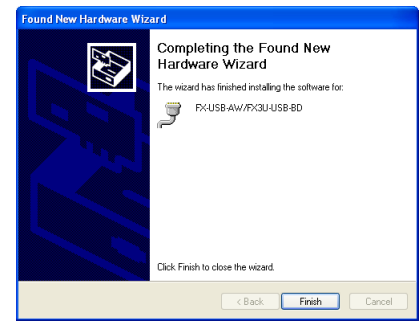
4) The following screen is displayed.



Click [Next >].
The installation of the USB Serial Port software will begin.
- If using Windows® 2000, a screen to select the location of the installation files is displayed.
Please select the CD-ROM drive.

5) The screen of 2) is displayed. (Only in Windows® XP)
Click [Continue Anyway].

6) The following screen is displayed.

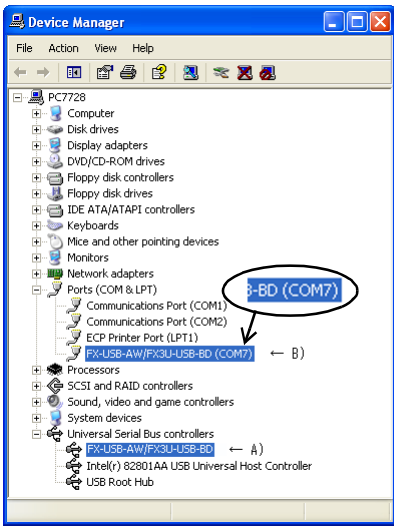


Click [Finish].
The installation of the USB Serial Port software will finish.
The CD-ROM (USB driver software) can be removed from the personal computer at this time.

6. Installation Confirmation of Driver

Procedure for confirming the installation of the driver is described below.
Windows® XP example follows.

- In Windows XP, click [Start] → [Control Panel] → [System] → [Hardware] → [Device Manager (D)] and the window below will be displayed.
Please confirm the COM number to which the FX-USB-AW is allocated (COM and LPT).
- If using Windows® 98, Windows® 98SE, Windows® Millennium Edition or Windows® 2000
A screen that is equivalent to the one below is displayed by clicking [My Computer] → [Control Panel] → [System] → [Device Manager] in the menu of the personal computer.



Check following:

- FX-USB-AW/FX3U-USB-BD is indicated at A).
- FX-USB-AW/FX3U-USB-BD (COM *) is indicated at B).
- * indicates the COM number used in FX-USB-AW.
- Install the driver again when ! is displayed.

Select the programming software COM number as the COM number currently assigned on the screen above.

Setting GX Developer:

Double-click [Online] → [Transfer setup] → [Serial] of PC side I/F.
Select the same COM number as the COM number of the personal computer when the PC side I/F serial setting Dialog Box appears.
Click [OK] of [Connection Setup] screen to end.



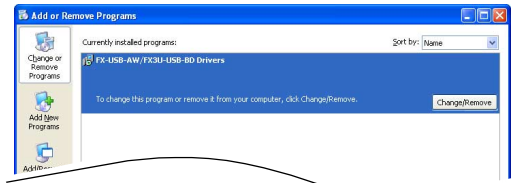
7. Method for Uninstalling Driver

The procedure for uninstalling the driver is explained below.
A Windows XP example follows.

Please uninstall the driver by the procedure below.

1) Detach the USB cable from the personal computer.

- Click [Start] → [Control Panel] → [Add or Remove Programs] in the menu of the personal computer, the window below will be displayed.
- In case of Windows Me of Windows 98 and Windows 98SE, Windows 2000
A screen that is equivalent to the one below is displayed by clicking [My Computer] → [Control Panel] → [Add/Remove Programs] in the menu of the personal computer.



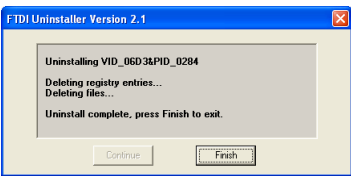
Click [Change/Remove].

2) The following screen is displayed.



Click [Continue].

3) The following screen is displayed.



Click [Finish].

8. Caution on Use

STARTUP AND MAINTENANCE PRECAUTIONS

DANGER

- Before a program or setting on-line or off-line change is performed, please read all relevant manuals and confirm safety aspects.
Incorrect operation may damage the product or cause an accident.

STARTUP AND MAINTENANCE PRECAUTIONS

CAUTION

- Do not disassemble or modify the unit.
Doing so may cause failure, malfunction or fire.
* For repair, contact your local Mitsubishi Electric distributor.
- Since the FX-USB-AW case is made of resin, do not drop the product or do not exert strong impact.
Doing so may cause damage.

DISPOSAL PRECAUTIONS

CAUTION

- Please contact a company certified in the disposal of electronic waste for environmentally safe recycling and disposal of the product.

TRANSPORT AND STORAGE PRECAUTIONS

CAUTION

- During transportation avoid any impact as the product is a precision instrument.
Check the operation of the product after transportation.

- FX-USB-AW and a personal computer are connected and the PLC is turned on, and then an operations such as write, read, and monitor are tried for the first time using a programming tool, a communication error message may be displayed.
In such a case, clear the message and try the operations again.
- If a communication error message is indicated while operating the programming tool (when executing 'Write to PLC', 'Read from PLC', or 'Monitor'), disconnect the USB cable once (from either the PC or the FX-USB-AW) and connect it again. Then clear the error message and choose Write, Read, or Monitor again.
- The programming tool may not be operated properly due to a contact failure at connectors or wire breakage.
Make sure to save the program before transferring or changing it.

9. Troubleshooting

If communication cannot be established between the PLC (as well as a positioning unit or a programmable cam switch) and a PC using FX-USB-AW, confirm the following status by checking POWER LED, SD LED, and RD LED in FX-USB-AW.

State of POWER LED	Contents
POWER LED is lit.	The DC5V power supply from the personal computer is normally supplied. In case of no communication, check the status of SD LED and RD LED.
POWER LED is not lit.	The DC 5V power supply from the personal computer is not supplied. Check the items below. <ul style="list-style-type: none">Confirm that the specified cable is used to connect the FX-USB-AW and the personal computer.Confirm whether the power supply is supplied to personal computer.

The status of SD LED and RD LED.		Contents
SD	Blinking	Communicating correctly
	Extinguished	<ul style="list-style-type: none">• Confirm that the power is supplied to the personal computer.• Confirm the personal computer and the PLC are connected properly with the specified cable.• Confirm that the communication settings and connected PLC are correctly set in the software. Refer to the software manual.
RD	Blinking	Data receiving
	Extinguished	<ul style="list-style-type: none">• Confirm that the power is supplied to PLC.• The PLC will not operate when a configuration that exceeds the DC 5V or DC 24V capacity is used. It will also be impossible to communicate normally.• Confirm that the specified cable is used to connect the personal computer and PLC.• Confirm that the communication settings and connected PLC are correctly set in the software. Refer to the software manual.

●Notification of CE marking●

This notification does not guarantee that an entire mechanical module produced in accordance with the contents of the notification comply with the following standards. Compliance to EMC standards of the entire mechanical module should be checked by the user / manufacturer.

Standards with which this product complies

Type: Programmable Controller (Open Type Equipment)
Models: Products manufactured from August 1st, 2004.

Electromagnetic Compatibility Standards (EMC)	Remark
EN61000-6-4:2001 Electromagnetic compatibility - Generic standards - Emission standard for Industrial environment	Compliance with all relevant aspects of the standard. (Radiated Emissions and Mains Terminal Voltage Emissions)
EN61131-2:2003 Programmable controllers -Equipment requirements and tests	Compliance with all relevant aspects of the standard.(RF Immunity, Fast Transients, ESD, Damped Oscillatory Wave, Conducted, Surge and Power Magnetic Fields)
EN61000-6-2:2001 Electromagnetic compatibility - Generic immunity standard Industrial environment	Compliance with all relevant aspects of the standard.(RF Immunity, Fast Transients, ESD, Voltage Dips, Voltage Interruptions, Conducted, Surge and Power Magnetic Fields)

Notes for compliance to EMC regulation.

It is necessary to install the (FX-USB-AW) in a shielded metal control panel.
For more details please contact the local Mitsubishi Electric sales site.

This manual confers no industrial property rights or any rights of any other kind, nor does it confer any patent licenses. Mitsubishi Electric Corporation cannot be held responsible for any problems involving industrial property rights which may occur as a result of using the contents noted in this manual.

Warranty

Mitsubishi will not be held liable for damage caused by factors found not to be the cause of Mitsubishi; machine damage or lost profits caused by faults in the Mitsubishi products; damage, secondary damage, accident compensation caused by special factors unpredictable by Mitsubishi; damages to products other than Mitsubishi products; and to other duties.

For safe use

- This product has been manufactured as a general-purpose part for general industries, and has not been designed or manufactured to be incorporated in a device or system used in purposes related to human life.
- Before using the product for special purposes such as nuclear power, electric power, aerospace, medicine or passenger movement vehicles, consult with Mitsubishi Electric.
- This product has been manufactured under strict quality control. However when installing the product where major accidents or losses could occur if the product fails, install appropriate backup or failsafe functions in the system.

